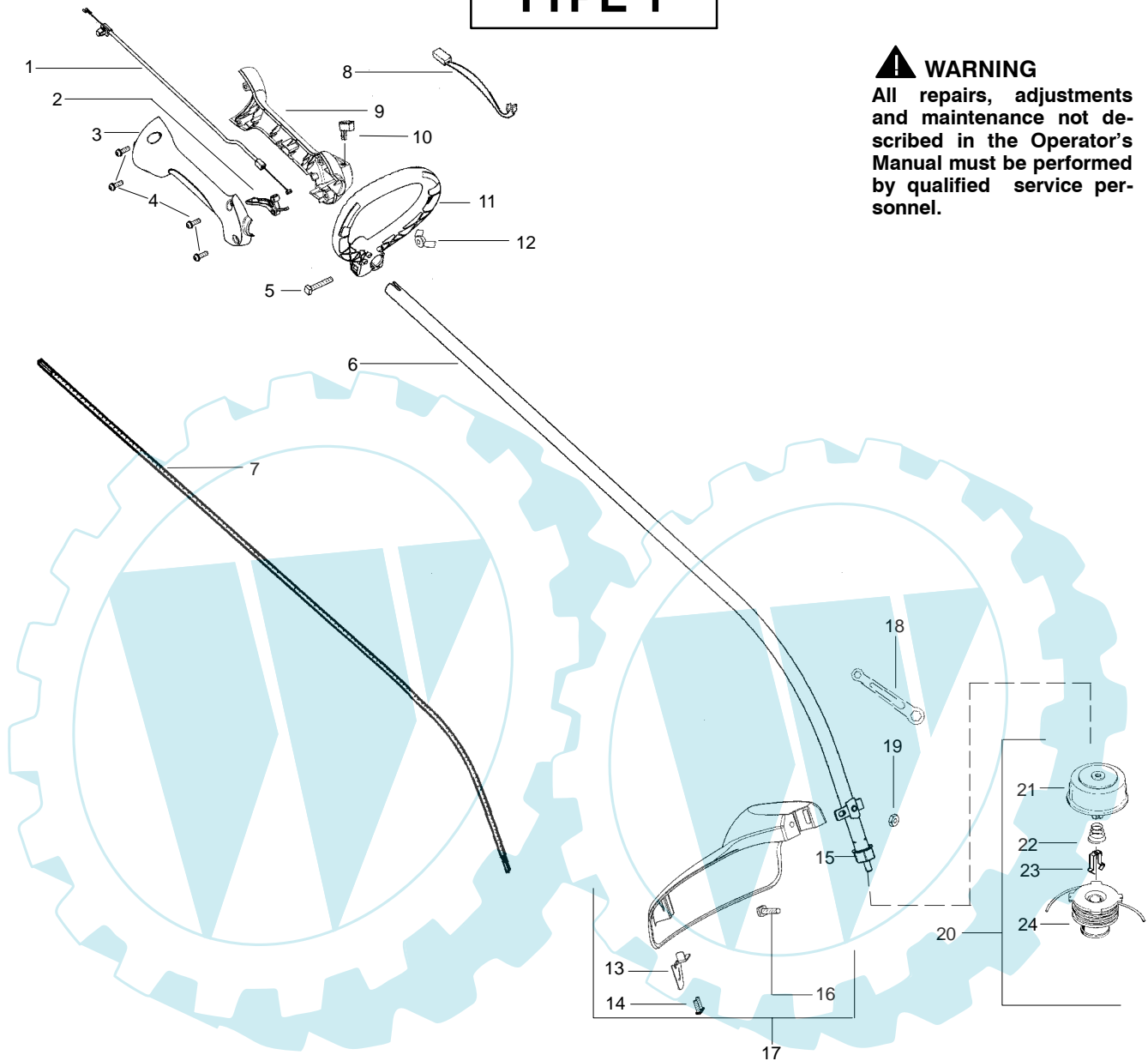


|                             |                                     |  |  |
|-----------------------------|-------------------------------------|--|--|
| PARTS LIST NO.<br>530165568 |                                     |  <b>PARTS LIST</b> | MODEL(s)<br>XLT250   |
| DATE<br>3/17/05             | Replaces<br>12/08/04 – 530165568-01 |  | <b>Note:</b> Illustration may differ from actual model due to design changes |

**TYPE 1**



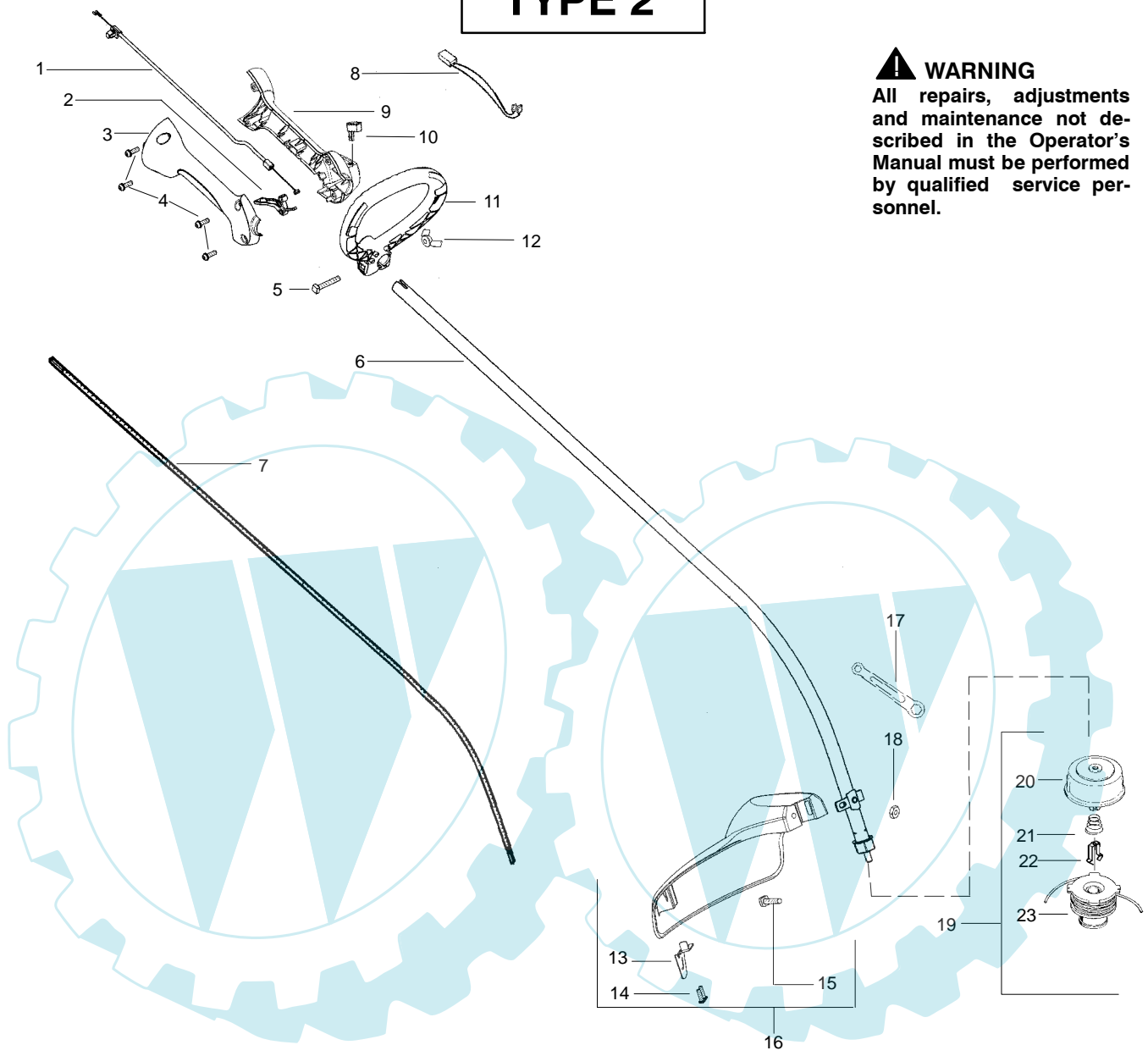
**⚠ WARNING**  
 All repairs, adjustments and maintenance not described in the Operator's Manual must be performed by qualified service personnel.

| Ref. | Part No.  | Description                                 | Ref.            | Part No.  | Description                                   |
|------|-----------|---|-----------------|-----------|---|
| 1.   | 530057991 | Assy - Throttle Cable                       | 18.             | 530056401 | Wrench  |
| 2.   | 530049107 | Trigger                                     | 19.             | 530015197 | Nut   |
| 3.   | 530057582 | Throttle Hsg. (Right)                       | 20.             | 530095846 | Assy - TNG VI Cutting Head<br>(Incl. 21 - 24) |
| 4.   | 530015880 | Screw - Throttle Hsg.                       | 21.             | 530095776 | Assy - Hub                                    |
| 5.   | 530015821 | Bolt - Handle                               | 22.             | 530053241 | Spring - Compression                          |
| 6. ✓ | 545041301 | Assy - Drive Shaft Hsg.                     | 23.             | 530401957 | Clip - Retainer - Head                        |
| 7.   | 530095242 | Shaft - Flex                                | 24.             | 530095845 | Assy - Spool w/Line                           |
| 8.   | 530054183 | Assy - Wire                                 | Not Shown       |           |   |
| 9.   | 530059952 | Throttle Hsg. (Left)                        | ---             |           |   |
| 10.  | 530069572 | Kit - Switch                                | Operator Manual |           |   |
| 11.  | 530057587 | Handle - Assist                             | ✓               | 530166147 | Scan  |
| 12.  | 530016152 | Wingnut                                     | ✓               | 530166146 | Euro  |
| 13.  | 530052287 | Line Limiter                                | ✓               | 530166148 | Euro III                                      |
| 14.  | 530015966 | Screw - Line Limiter                        | ✓               | 530166149 | Euro IV                                       |
| 15.  | 530095563 | Dust Cup                                    | ✓               | 530166150 | Turkish                                       |
| 16.  | 530015820 | Bolt  | ✓               | 530150303 | Decal - Shaft Warning                         |
| 17.  | 530071972 | Kit - Shield Assy<br>(Incl. 13,14,16,18,19) |                 |           |   |

✓ = NEW PART NUMBER FOR THIS IPL    ★ = REFER TO THE SERVICE REFERENCE INDICATED FOR MORE INFORMATION. (LOCATED AT END OF IPL)

|                                    |                                     |  |  |
|------------------------------------|-------------------------------------|--|--|
| PARTS LIST NO.<br><b>530165568</b> |                                     |  <b>PARTS LIST</b> | MODEL(s)<br><b>XLT250</b>  |
| DATE<br><b>3/17/05</b>             | Replaces<br>12/08/04 – 530165568-01 |  | <b>Note:</b> Illustration may differ from actual model due to design changes |

# TYPE 2



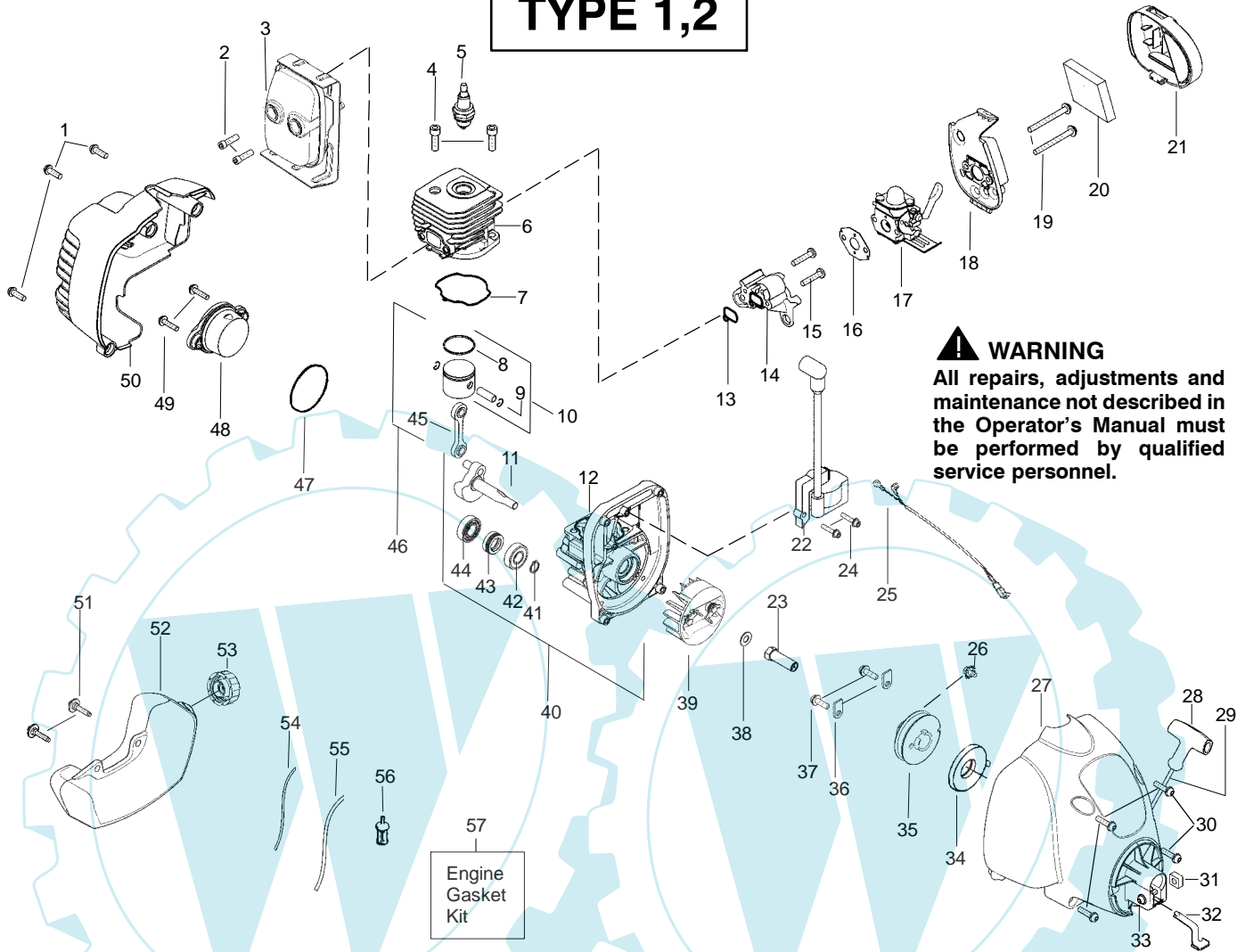
**⚠ WARNING**  
 All repairs, adjustments and maintenance not described in the Operator's Manual must be performed by qualified service personnel.

| Ref. | Part No.      | Description                                 | Ref. | Part No.  | Description                                       |
|------|---------------|---|------|-----------|---|
| 1.   | 530057991     | Assy – Throttle Cable                       | 17.  | 530056401 | Wrench  |
| 2.   | 530049107     | Trigger                                     | 18.  | 530015197 | Nut   |
| 3.   | 530057582     | Throttle Hsg. (Right)                       | 19.  | 530095846 | Assy – TNG VI Cutting Head<br>(Incl. 20,21,22,23) |
| 4.   | 530015880     | Screw – Throttle Hsg.                       | 20.  | 530095776 | Assy – Hub  |
| 5.   | 530015821     | Bolt – Handle                               | 21.  | 530053241 | Spring – Compression                              |
| 6.   | ✓530071984-01 | Kit – Drive Shaft Hsg.                      | 22.  | 530401957 | Clip – Retainer – Head                            |
| 7.   | ✓530096275    | Shaft – Flex                                | 23.  | 530095845 | Assy – Spool w/Line                               |
| 8.   | 530054183     | Assy – Wire                                 |      |           | Not Shown   |
| 9.   | 530059952     | Throttle Hsg. (Left)                        |      |           | Operator Manual                                   |
| 10.  | 530069572     | Kit – Switch                                |      |           | Scan  |
| 11.  | ✓530058580    | Assy – Handle (Incl. 5,12)                  |      |           | Euro  |
| 12.  | 530016152     | Wingnut                                     |      |           | Euro III  |
| 13.  | 530052287     | Line Limiter                                |      |           | Euro IV   |
| 14.  | 530015966     | Screw – Line Limiter                        |      |           | Turkish   |
| 15.  | 530015820     | Bolt  |      |           | Decal – Shaft Warning                             |
| 16.  | 530071972     | Kit – Shield Assy<br>(Incl. 13,14,15,17,18) |      |           |   |

✓ = NEW PART NUMBER FOR THIS IPL      \* = REFER TO THE SERVICE REFERENCE INDICATED FOR MORE INFORMATION. (LOCATED AT END OF IPL)

|                             |                                     |  |  |
|-----------------------------|-------------------------------------|--|--|
| PARTS LIST NO.<br>530165568 |                                     |  <b>PARTS LIST</b> | MODEL(s)<br>XLT250   |
| DATE<br>3/17/05             | Replaces<br>12/08/04 - 530165568-01 |  | <b>Note:</b> Illustration may differ from actual model due to design changes |

# TYPE 1,2



**⚠ WARNING**  
 All repairs, adjustments and maintenance not described in the Operator's Manual must be performed by qualified service personnel.

| Ref.  | Part No.  | Description                   | Ref. | Part No.  | Description                          | Ref. | Part No.  | Description                                     |
|---|-----------|-------------------------------|------|-----------|--------------------------------------|------|-----------|---|
| 1.  | 530015880 | Screw                         | 21.  | 530057584 | Cover-Air Box                        | 45.  | 530069945 | Assy-Connecting Rod                             |
| 2.  | 530058982 | Bolt-Muffler                  | 22.  | 545024901 | Ignition Module                      | 46.  | 530071785 | Kit-Piston/Rod Assy (Incl. 10 & 45)             |
| 3.  | 530059826 | Assy-Muffler/Shield (Incl. 2) | 23.  | 530038604 | Coupling-Drive                       | 47.  | 530071750 | O-Ring-C'case (kit)                             |
| 4.  | 530015953 | Screw-Cylinder                | 24.  | 530016357 | Screw                                | 48.  | 530057954 | Assy-Plug (incl.47)                             |
| 5.  | 952030249 | Spark Plug (RCJ 6Y)           | 25.  | 530049018 | Assy-Wire Harness                    | 49.  | 530016386 | Screw   |
| 6.  | 530012541 | Cylinder                      | 26.  | 530016392 | Screw                                | 50.  | 545011002 | Shroud-Rear                                     |
| 7.  | 530071750 | Seal-Cylinder (kit)           | 27.  | 545010602 | Assy.-Fan Hsg                        | 51.  | 530016431 | Retainer-Tank                                   |
| 8.  | 530055120 | Piston Ring                   | 28.  | 530027569 | Handle-Starter                       | 52.  | 530058712 | Assy-Fuel Tank (incl. filter, lines & fuel cap) |
| 9.  | 530015162 | Retainer-Piston Pin           | 29.  | 530071767 | Kit - Rope                           | 53.  | 530014347 | Assy-Fuel Cap                                   |
| 10.   | 530071833 | Kit - Piston (Incl. 8, 9)     | 30.  | 530015810 | Screw                                | 54.  | 530069247 | Kit-Fuel Line (Small)                           |
| 11.   | 530057829 | Assy-Crankshaft               | 31.  | 530016124 | Nut                                  | 55.  | 530069216 | Kit-Fuel Line (Large)                           |
| 12.   | 530012582 | Assy-Crankcase (Incl. 42-44)  | 32.  | 530057588 | Clip-Spring                          | 56.  | 530095646 | Assy-Fuel Pickup                                |
| 13.   | 530071750 | Seal-Cyl/Carb.(kit)           | 33.  | 530016430 | Screw                                | 57.  | 530071750 | Kit-Engine Gasket (Incl. 7,13,16,47)            |
| 14.   | 530057547 | Adapter-Carb.                 | 34.  | 530042085 | Spring-Starter                       |      |           |   |
| 15.   | 530016309 | Screw                         | 35.  | 530071786 | Kit-Pulley-Starter                   |      |           |   |
| 16.   | 530071750 | Gasket-Carb. (kit)            | 36.  | 530027523 | Retainer-Pulley                      |      |           |   |
| 17.   | 530071822 | Kit-Carb.(C1U-W24)            | 37.  | 530015775 | Screw                                |      |           |   |
| (Note: Repair kits are not available for this carburetor) |           |                               | 38.  | 530015828 | Washer-Flat                          |      |           |   |
| 18.   | 530059267 | Air Box                       | 39.  | 545005101 | Assy-Flywheel                        |      |           |   |
| 19.   | 530016429 | Screw                         | 40.  | 530071768 | Assy-C'case/C'shaft (Incl. 11,12,41) |      |           |   |
| 20.   | 530057781 | Foam-Air Filter               | 41.  | 530015941 | Retain. Ring-C'shaft                 |      |           |   |
|   |           |                               | 42.  | 530055728 | Outer Bearing                        |      |           |   |
|   |           |                               | 43.  | 530019264 | Seal                                 |      |           |   |
|   |           |                               | 44.  | 530032125 | Inner Bearing                        |      |           |   |

↖ = NEW PART NUMBER FOR THIS IPL    \* = REFER TO THE SERVICE REFERENCE INDICATED FOR MORE INFORMATION. (LOCATED AT END OF IPL)